

INSTRUCTIONS

! WARNING

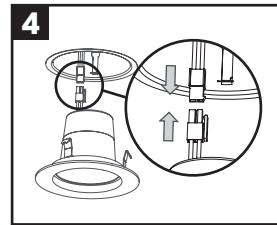
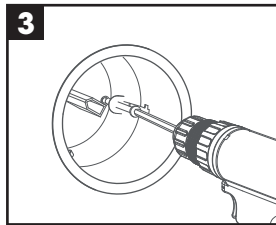
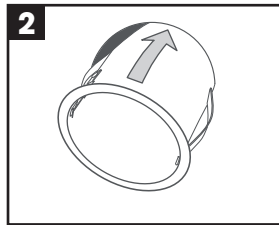
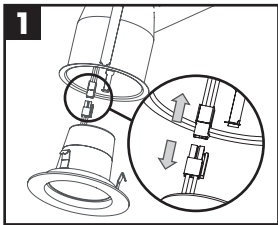
SHUT OFF POWER TO SERVICE LEADS (120V) BEFORE PROCEEDING WITH CONNECTIONS

CONNECTIONS

Connect black wire (live) to colored wire, white (neutral) to white and bare copper (ground) to bare copper wire from fixture. The use of a wire clip (not included) is recommended. Installation must be in conformance with the electrical code of your region.

INSTALLATION

1. Remove trim and unplug the connector.
2. Push and hold fixture into installation hole.
3. Tighten the 2 screws until the fixture sits firmly in place.
4. Plug the connector and install the trim.

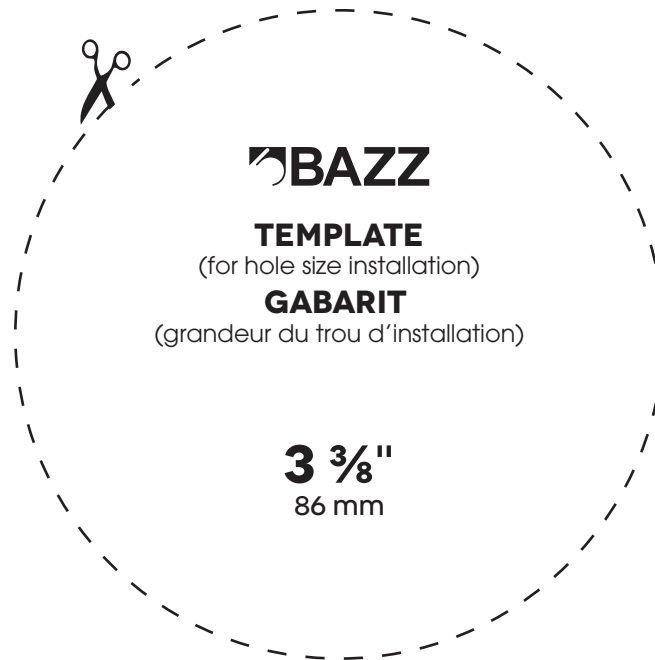


Recommendation

For pre-drywall construction it's recommended to use **BAZZ** plaster frame **PF1101**.

Recommandation

Pour une installation dans une nouvelle construction, l'utilisation de la plaque de montage **PF1101** de **BAZZ** est recommandée.



BAZZ 2016 ©

6000 BOULEVARD THIMENS
SAINT-LAURENT, QC
CANADA, H4S 1S5
1.800.931.4470
WWW.BAZZ.CA